

2013
Baseline situation

Rural

Wedung delta to Tambak Bulusan

Rural degraded

Surodadi to Bedono

Peri-urban setting

Bedono to Semarang

Wedung delta



6 km

Timbul Sloko

Increased risk after greenbelt removal for aquaculture

Off shore sediment deposition due to canalisation

Mangrove planting not effective

Hard structures exacerbates erosion

Main road frequently flooded



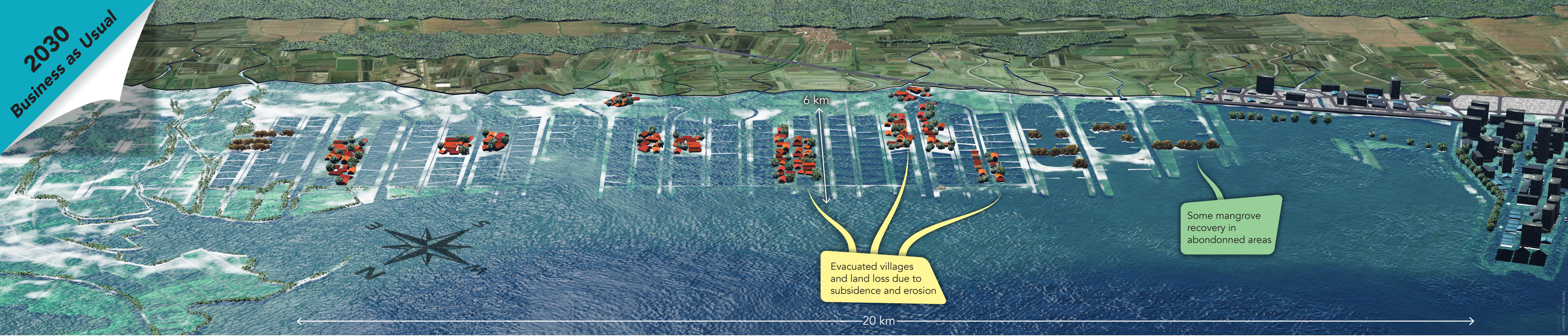
Tidal basins because of subsidence.

Evacuated villages and landloss due to subsidence

Ponds swallowed by the sea

Subsidence due to groundwater extraction

20 km



2030
Business as Usual

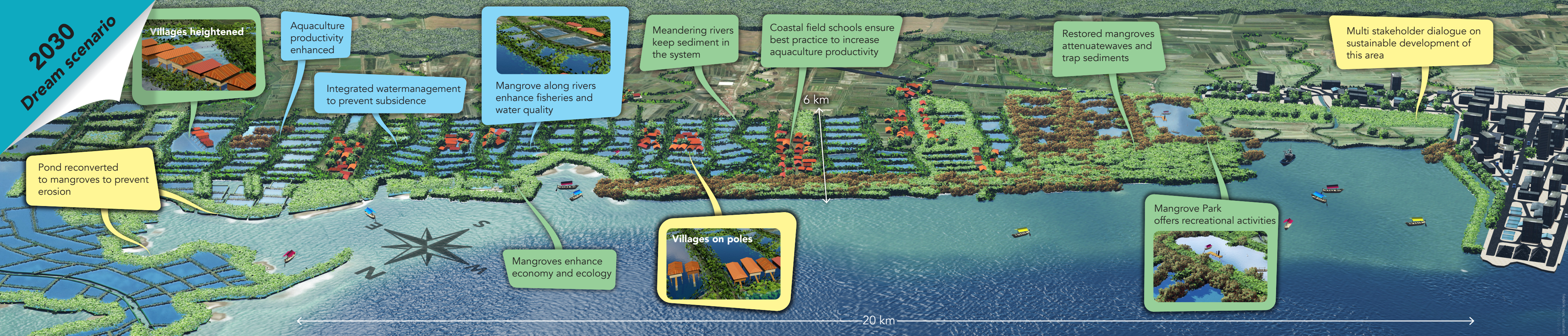
6 km

Evacuated villages
and land loss due to
subsidence and erosion

Some mangrove
recovery in
abandoned areas

20 km





2030
Dream scenario

Villages heightened

Aquaculture productivity enhanced

Integrated watermanagement to prevent subsidence

Mangrove along rivers enhance fisheries and water quality

Meandering rivers keep sediment in the system

Coastal field schools ensure best practice to increase aquaculture productivity

Restored mangroves attenuate waves and trap sediments

Multi stakeholder dialogue on sustainable development of this area

Pond reconverted to mangroves to prevent erosion

Mangroves enhance economy and ecology

Villages on poles

Mangrove Park offers recreational activities

6 km

20 km

