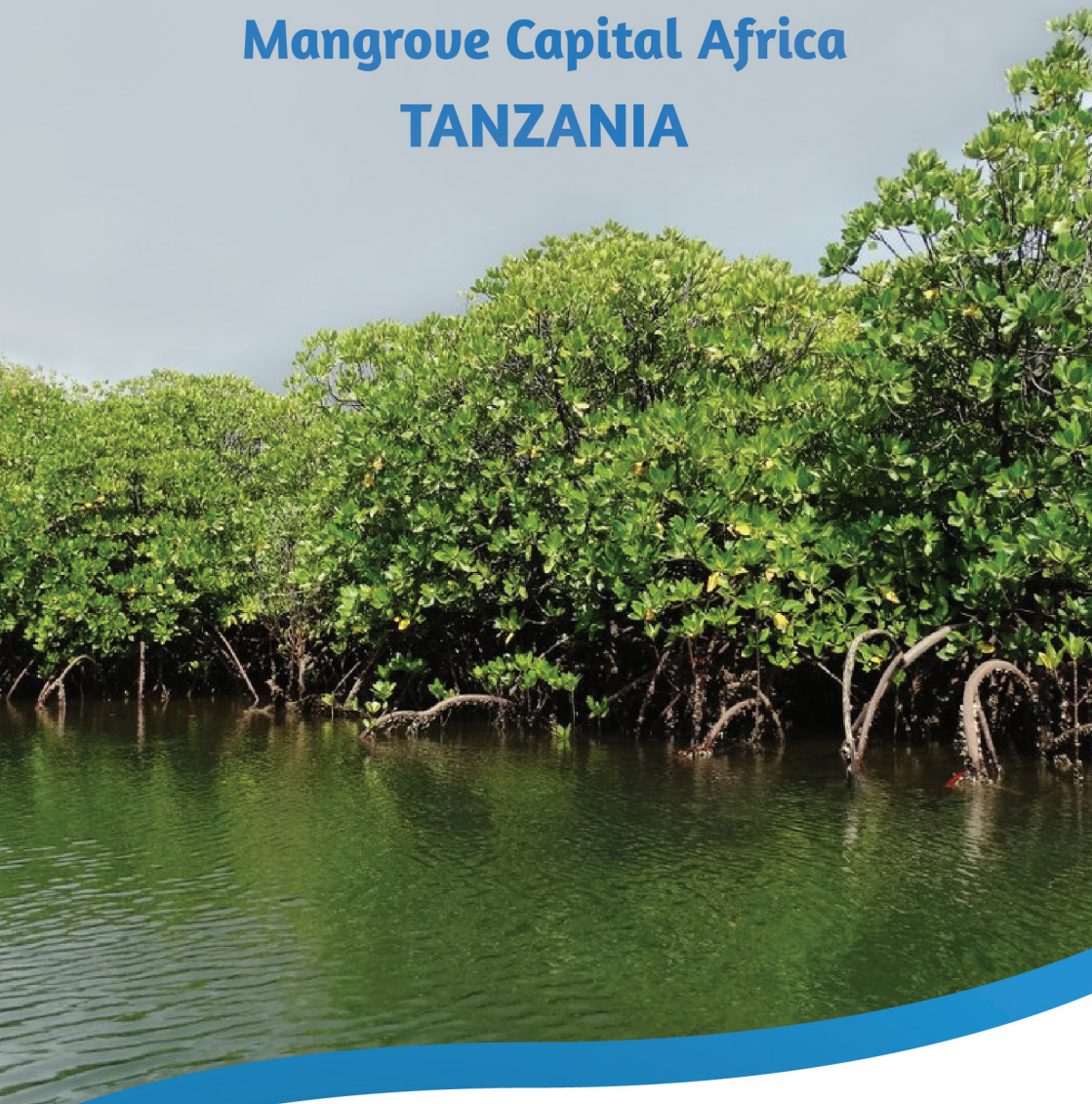


Mangrove Capital Africa TANZANIA



Wetlands
INTERNATIONAL



Mangrove Capital Africa Safeguarding Nature for People

Wetlands International has worked for many years with local communities, governments all over the world to safeguard and restore mangroves. However alternative approaches which upscale strategies and ensure their autonomous seeding and replication along the East African coast are needed so as to halt and reverse the degradation of mangroves. Mangrove Capital Africa is an integrated long term programme that is intended to cause a tipping point where all stakeholders understand the values of mangroves and work together to protect them.

Mangrove Capital Africa (MCA) Programme is a 10-year programme whose vision is: *Mangroves and their biodiversity are healthy, improving the livelihoods of millions of people and protecting them against the dangers of climate change.*

MCA targets the coasts of East and West Africa. In East Africa the initial focus is on the Rufiji Delta in Tanzania.

Why Mangrove Forests in Rufiji Delta

The Rufiji Delta covers an area of 53,255 ha and has the largest expanse of mangrove forest in Eastern Africa. Common mangrove species are *Avicennia marina*, *Sonneratia alba*, *Rhizophora mucronata*, *Bruguiera gymnorhiza*, *Ceriops tagal*, *Xylocopus granmatum* and *Heritiera littoralis*. The mangrove ecosystem in Rufiji delta provides a living for many iconic species, ranging from fish, shellfish, migratory water birds many

of which are in flight from the European winter, sea turtles nesting on beaches secured by mangrove roots, crabs and shrimp that thrive in mangrove shallows. Despite the huge value of mangroves in the Rufiji delta, they are being heavily exploited and degraded. Causes of mangrove loss and degradation range from agriculture developments for rice and over exploitation for poles and timber, in the absence of alternative income sources. On top of this, the effects of human-induced climate change also loom.

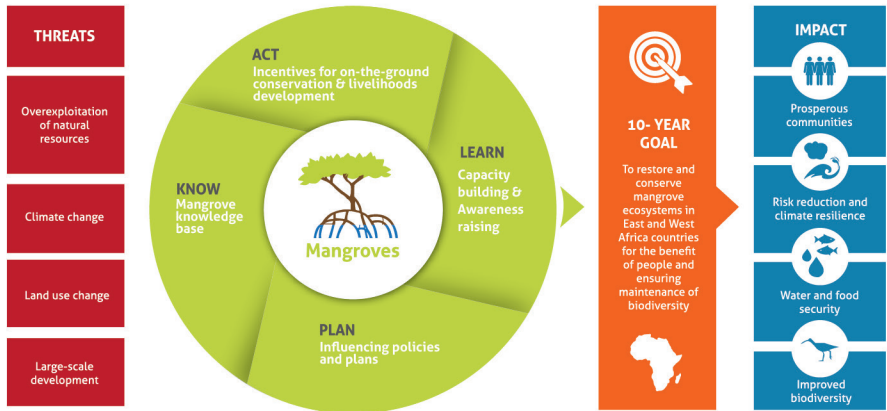
How we will work

We will work in partnership with many groups ranging from local communities, government agencies, civil society, NGO's, private sectors and interested individuals to manage mangroves sustainably. We have adopted an eco-regional approach and we will help Civil Society Organisations (CSOs) to increase their impact on the ground. We will organize them in a platform and build their capacities and most importantly we will implement the programme together with these Civil Society Organisations so as to ensure that they are better positioned to address the present and future conservation challenges. Together with them we will raise awareness about mangrove values, change private and public policies and have a real, lasting impact on mangrove biodiversity while improving the livelihoods of those people who depend on them.

The Mangrove Capital Africa’s Programme in Rufiji Delta consists of four building blocks to achieve the following objectives:

- | | | | |
|----------|--|----------|--|
| 1 | ACT: Mangrove management and rehabilitation, and sustainable livelihood activities are supported in threatened mangrove sites and scaled up by local stakeholders; | 2 | KNOW: Knowledge about the functions, values and threats to mangroves in Africa is compiled and made publically available as a basis for improved coastal zone management; |
| 3 | LEARN: CSOs and coastal zone managers from government and the private sector in Tanzania are aware of the values of mangroves and are able to conserve and restore them as part of broader development plans; | 4 | PLAN: Policies and plans at local, national and regional levels support conservation, restoration and wise use of mangroves and prevent mangrove destruction from large-scale developments. |

Mangrove Capital Africa: Theory of Change



About us

We will empower local communities by raising their awareness on mangrove values, helping them develop alternative mangrove economies and sustainable management strategies and in turn influence them to integrate mangrove capital into their daily activities in relation to the delta resources.

These efforts will ensure that communities, have developed, resourced and implemented management plans that improve the conservation of mangroves. Unsustainable activities, such as deforestation and overharvesting will reduce. Local people will earn more from mangrove products that they harvest sustainably and large-scale community-based rehabilitation efforts will ensure the revival of previously heavily degraded sites.

Wetlands International is a global non-governmental organisation committed to the conservation and restoration of wetlands for people and nature. The Tanzania office is one of 16 offices around the world; our head office is based in the Netherlands and our Africa regional office is in Senegal. The Eastern Africa regional office is based in Nairobi and at present -oversees operations in the Eastern Africa Region (Kenya, Tanzania, Uganda, Ethiopia and South Sudan).

Vision

A world where wetlands are treasured and nurtured for their beauty, the life they support and the resources they provide.

Mission

To sustain and restore wetlands, their resources and biodiversity.

Stay connected.

Mangrove Capital Africa

Rufiji Delta - Tanzania

Phone: +255 788 675 500; +255 625 879 540

Email: WetlandsIntEA@wetlands-africa.org

Website: www.wetlands.org/africa

Facebook: Wetlands International Eastern Africa

Twitter: [@wetlandsintEA](https://twitter.com/wetlandsintEA)



Photo: Pieter Van Eijk